

What happens during the examination?



During the examination, you will be lying on a comfortable, patient table. This table will then slowly move you through the “gantry,” which is the opening of the examination unit. Please pay careful attention to the technician.

He or she may give you important instructions to aid in your examination. You may even be asked to hold your breath for a few seconds while remaining motionless during the scan.

Although you will not feel any pain, you will hear a low, whirring noise, and the patient table will move slightly during the entire examination.

How is the CT scan made?

Scanning is a computer-controlled electronic procedure comparable to digital photography. While you are in the scanner, the X-ray system is taking extremely detailed cross-sectional images of your heart. Based on the data acquired, the computer then generates the result images (often in 3-D). This way it aids your physician in reliably and precisely visualizing and then diagnosing the presence or absence of heart disease.

“We offer a comprehensive approach to treating heart disease that is unlike any other cardiovascular program in the south suburban area. The CT scan is located alongside the cardiac catheterization lab and, therefore, fully integrated with our complete line of cardiovascular services. Patients may have their follow-up services completed at one convenient location.”

P. Sandy Sundram, M.D., Medical Director

SOMATOM
Sensation 64



How should I prepare?

Please talk to the physician referring you for a multi-slice cardiac CT scan. He or she will give you detailed information on how to prepare yourself for the examination. Be sure to tell your doctor if you are pregnant. Like other X-ray examinations, CT scans should not be performed during pregnancy because of the exposure to radiation.

To schedule a procedure

You must have a physician referral for this test. Multi-slice cardiac CT scans are offered from 7:30 a.m. – 2:30 p.m., Monday – Friday, in the Cardiology Department at Ingalls Memorial Hospital. (Dates and times are subject to change without notice.)

Call Ingalls Care Connection at

1.800.221.2199

for more information.

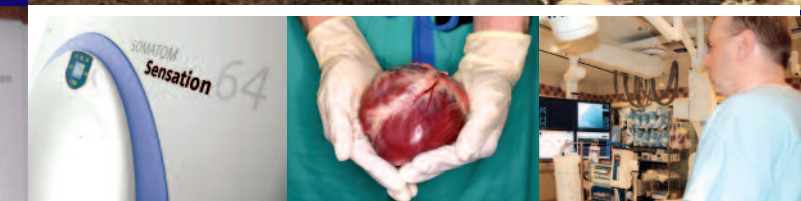


One Ingalls Drive
Harvey, IL 60426

www.ingallshealthsystem.org

I N G A L L S

Integrated Heart Care



Multi-slice Cardiac CT Scan

INGALLS INTEGRATED HEART CARE

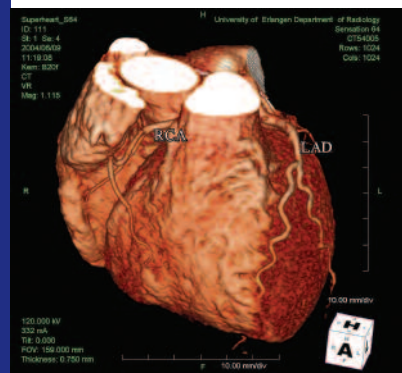
Welcome to Ingalls Integrated Heart Care (IIHC), a “one-stop” facility for the testing, diagnosis, treatment and prevention of heart disease. Our comprehensive cardiology program includes a team of physicians, registered nurses and expert staff that will collaborate with your physician to administer the best care and treatment plan. Whether it is a non-invasive or minimally invasive procedure, you can be assured that you are in exceptional hands.

At IIHC you will find that we have the latest tools and technology all under one roof, including:

- ▶ Echocardiography
- ▶ Stress testing and imaging
- ▶ EKG
- ▶ Cardiac Catheterization
- ▶ Multi-slice cardiac CT scan *(New!)*



Multi-slice Cardiac CT Scan

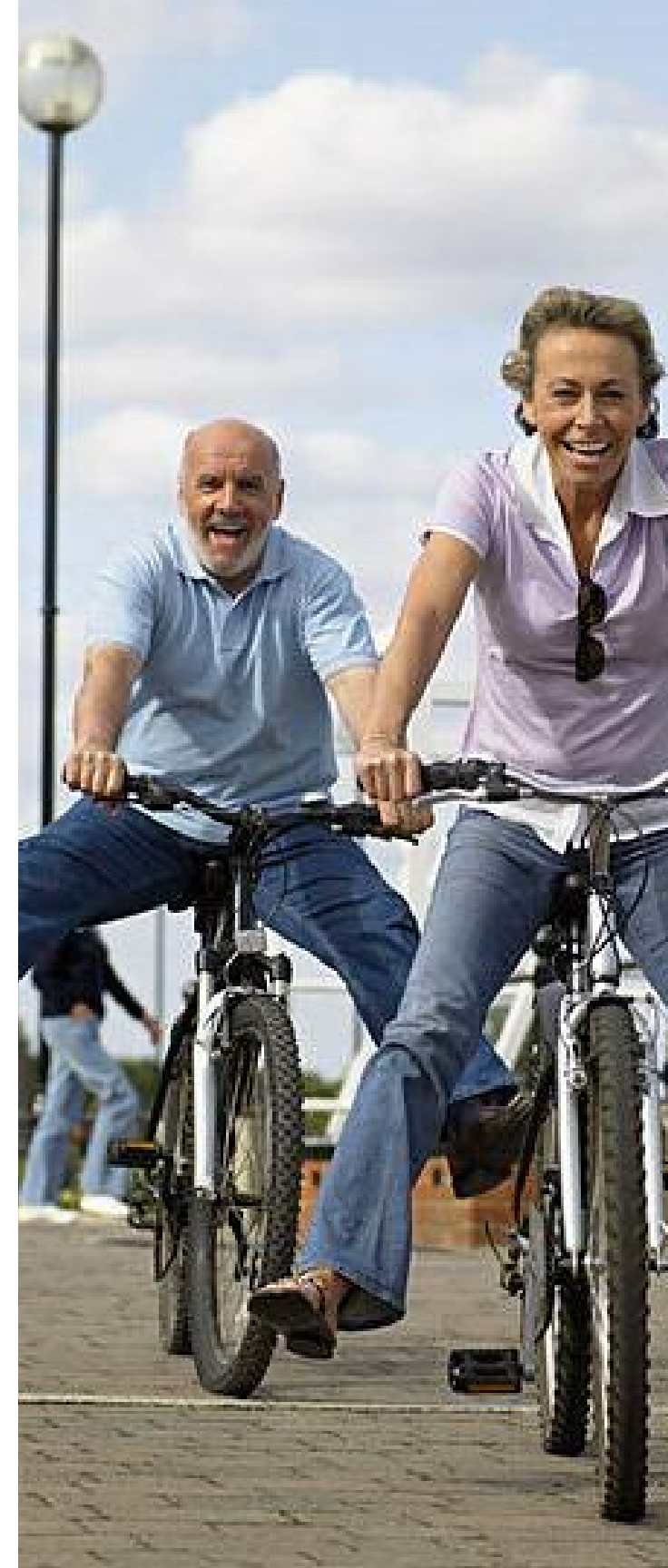


Many times, people with heart disease have few visible symptoms. Yet, heart disease is the number one killer for both men and women in America.

IIHC offers a multi-slice cardiac CT scan (MSCT) for the detection and management of heart disease. This non-invasive test could save your life or the life of someone you love. Using a state-of-the-art, 64-slice CT scanner, our physicians can look inside the heart and its arteries for plaque and calcium build-up.

Confirmed as the most powerful predictors of heart attacks, sudden death and other forms of heart disease, plaque and calcium build-up are medically proven to be clinical markers for heart disease.

Detecting any signs of heart disease is extremely important because the sooner heart disease is detected, the greater the chance that it can be stopped or reversed. This can often be done by medication or lifestyle modifications. MSCT can detect plaque years, or even decades, before stress testing or any other type of non-invasive technology can do so. It may also be used to assess a patient following open-heart surgery or a cardiac catheterization.



Contrast medium

A contrast medium will be administered to aid in strengthening the resulting diagnosis. Most people tolerate the contrast medium without any problems and merely feel flushed for a moment. Since the contrast medium contains iodine, which may cause an allergic reaction in some people, you should consult with your physician regarding any existing allergies prior to the examination.

Your results

Our board-certified cardiologists will analyze the images produced by the scan and send a report of the diagnosis to the referring physician, who will then discuss the results with you. Equipped with this information, your personal physician can recommend lifestyle changes to help slow, stop or even reverse heart disease.

Who should consider a MSCT?

Prime candidates are men age 40-plus and women age 45-plus or with one or more risk factors for heart disease, such as smoking, high blood pressure, high cholesterol or a history of cardiac disease in the family. Your physician may also consider using MSCT in conjunction with stress testing in patients with known heart disease.